



Regional Parks and Open Space

Trails/Trailheads

- Total miles of trail – 166 miles
- Many trails within Regional Parks & Neighborhood Parks
- Some begin at Trailheads



Regional Parks and Open Space

Trails

Trail Maps

Trail Resources

Trails Challenge

Washoe County Trails

Explore the natural beauty of northern Nevada! Washoe County and the cities of Reno and Sparks offer a range of opportunities, from paved paths in parks to rugged wilderness trails. The outlying areas offer even more trails on land managed by the Bureau of Land Management, Nevada State Parks and the U. S. Forest Service.





Regional Parks and Open Space

Truckee Meadows Parks Directory

Share this link: parkfinder.washoecounty.us  

WASHOE COUNTY
HEALTH DISTRICT
ENHANCING QUALITY OF LIFE

Park Finder

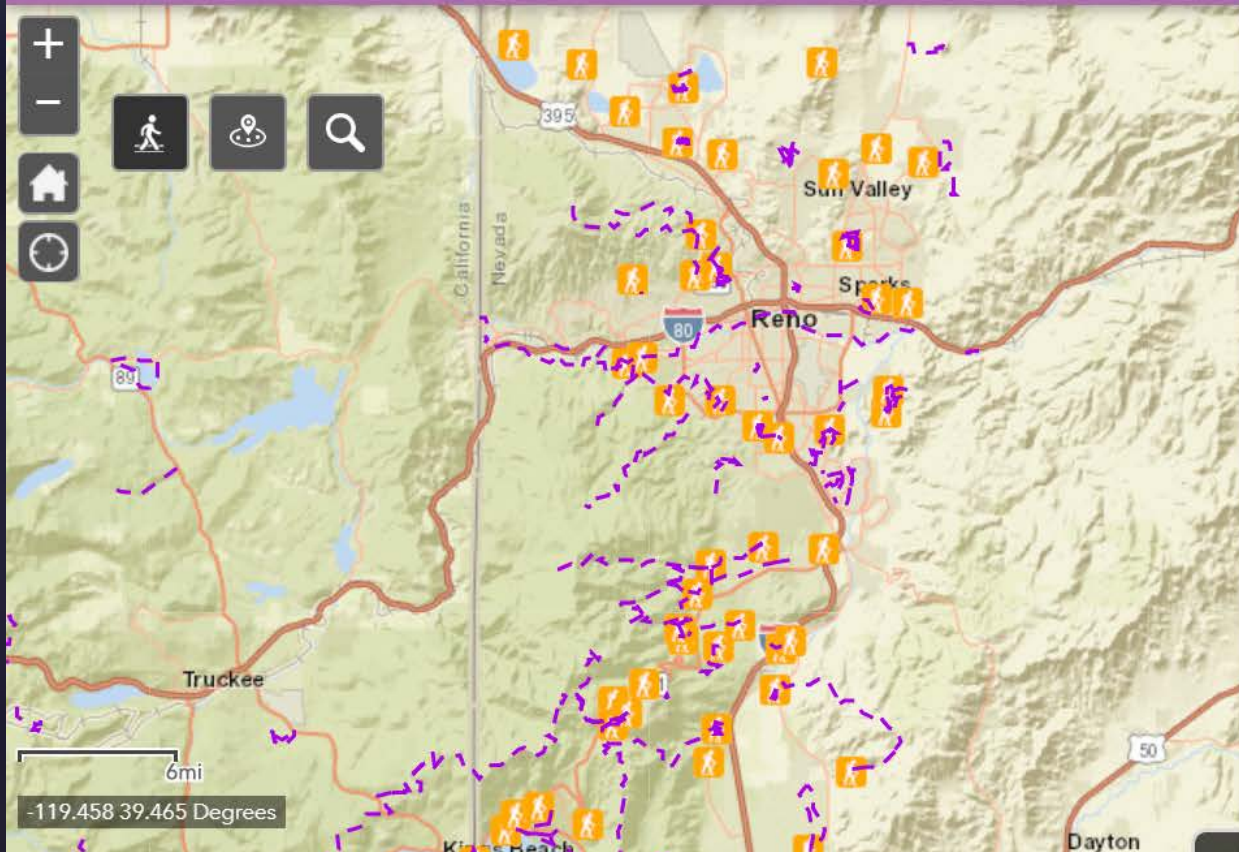
Sports Fields

Pocket Parks

Trail Finder

More Info

Trail Finder



How to use this Trails Finder

Trail locations shown in the map are generalized; the purple lines highlight the trail path - always consult maps posted at trailheads for details on any trail.



Trails Filter

- For each Trail type you want, slide the button to the right.
- When the button turns green, this amenity is active in the filter and only trails with green amenities will be shown.
- Click the filter icon to close the filter, or to re-open it.
- Green filters stay active until you pull the slider to the left, regardless of whether the menu is open or closed.

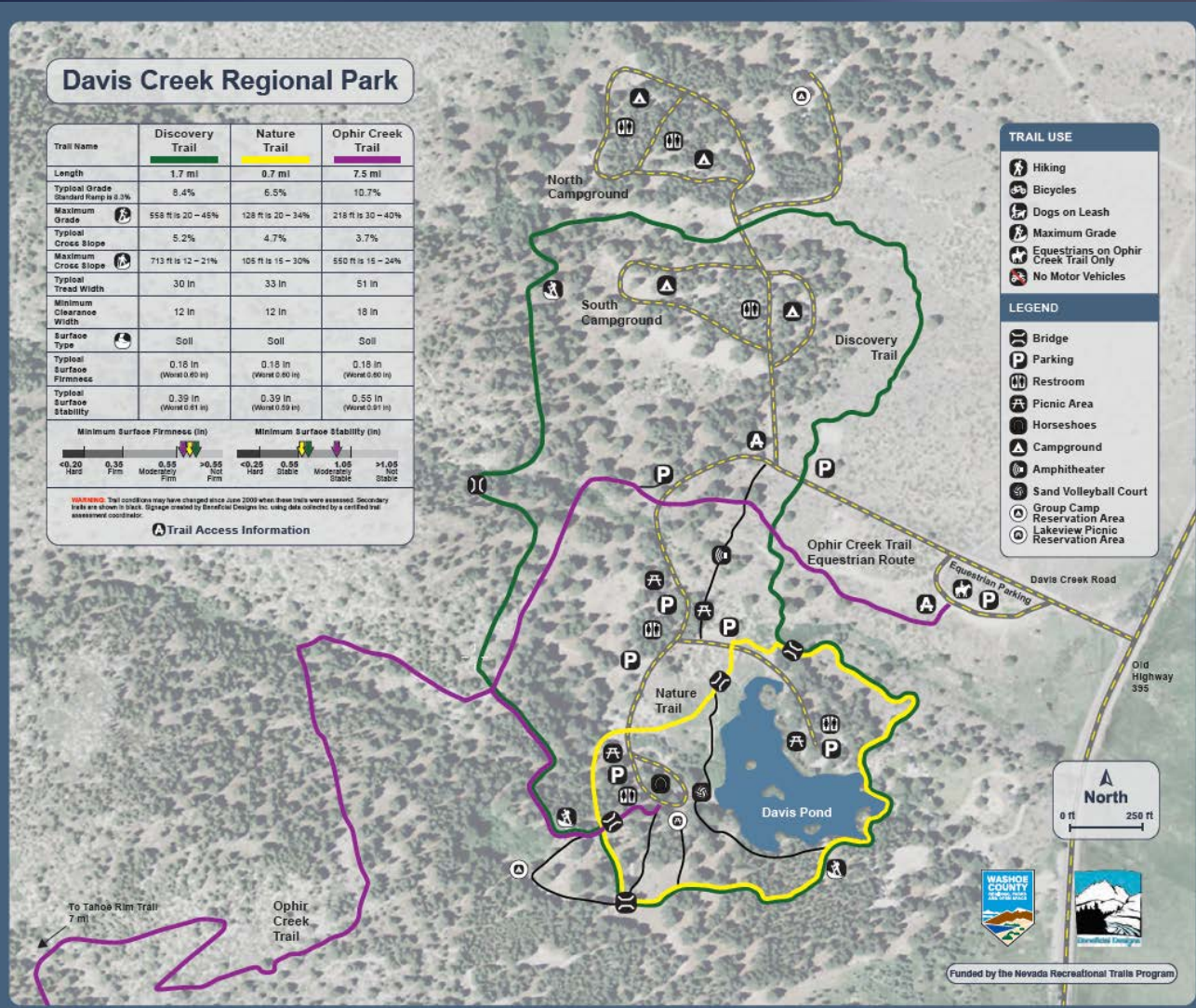


Trails Near Me

- Click the icon to find trails near a location.
- Enter an address in the search box OR click on the map.
- Use the distance slider to set your search distance.
- Trails within your search distance will be listed in the box.
- If you used the amenities filter, only trails that are within your search distance AND that meet your filter criteria will be returned.



Ophir Creek Trailhead and Davis Creek Park Trails



- Davis Creek Park - trails in park total 2.4 miles
- Ophir Creek Trail 7.5 miles to Tahoe Rim Trail at Tahoe Meadows





Browns Creek Trailhead



- Trail construction between 2006 & 2009
- Cooperative Partnership with St. James Village to create trail system
- Total 4.5 miles





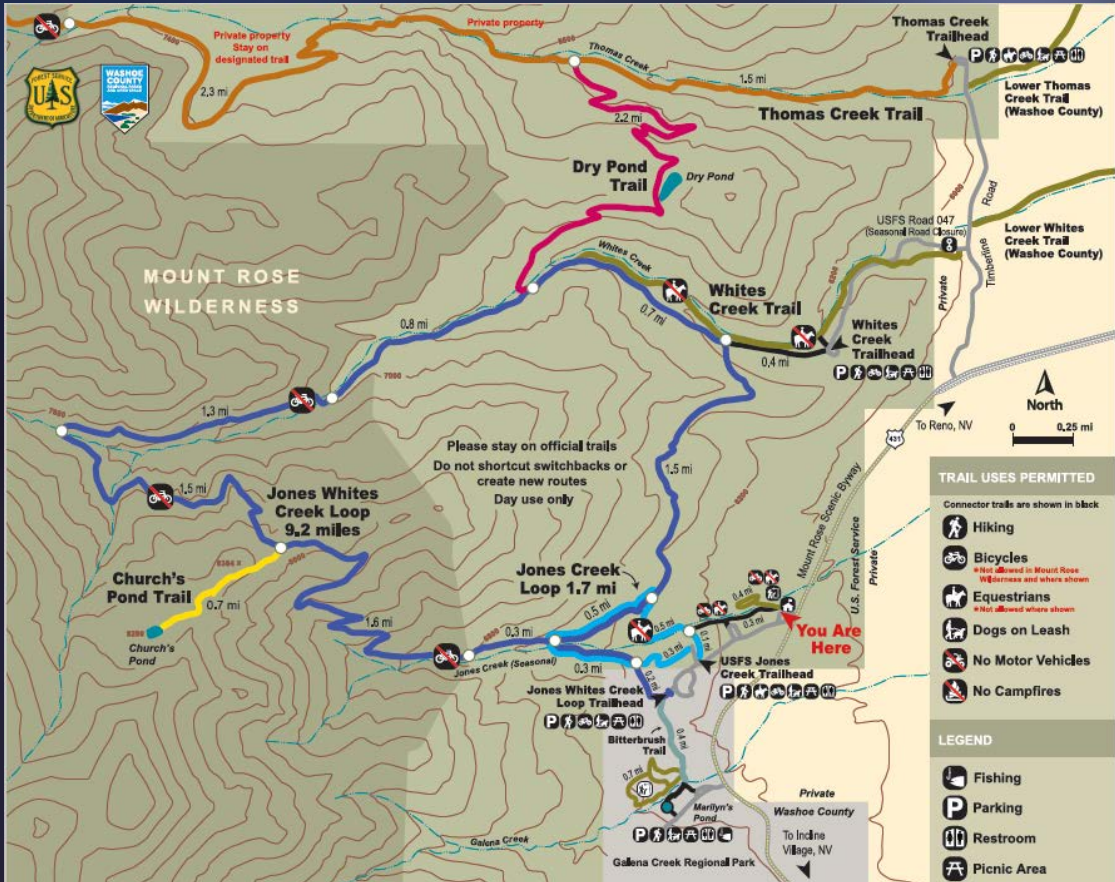
Galena Creek Trailhead



- Trail begins at Callahan Park
- Travels along Galena Creek to Mt. Rose Hwy (2.25 miles)
- Needs to connect to Galena Creek Park
- Desired pedestrian accessible bridge crossing at Mt. Rose Hwy & Douglas Fir



Jones Creek/Whites Creek/Thomas Creek Trailheads



- Jones/Whites Loop (9.2 miles) is at Galena Creek Park; 3 other trails for a total of 3.3 miles
- Whites Creek & Thomas Creek Trailheads off Timberline Drive
- MOU with USFS for management of Whites/Thomas trailheads
- Dedicated in 2003

Jones/Whites/Thomas Creeks Trail System

FREE COPIES of this map can be downloaded from the Humboldt-Toiyah National Forest website or by calling the US Forest Service Carson Ranger District at (775) 862-2765. Map created September 2010.



Ballardini Trailhead

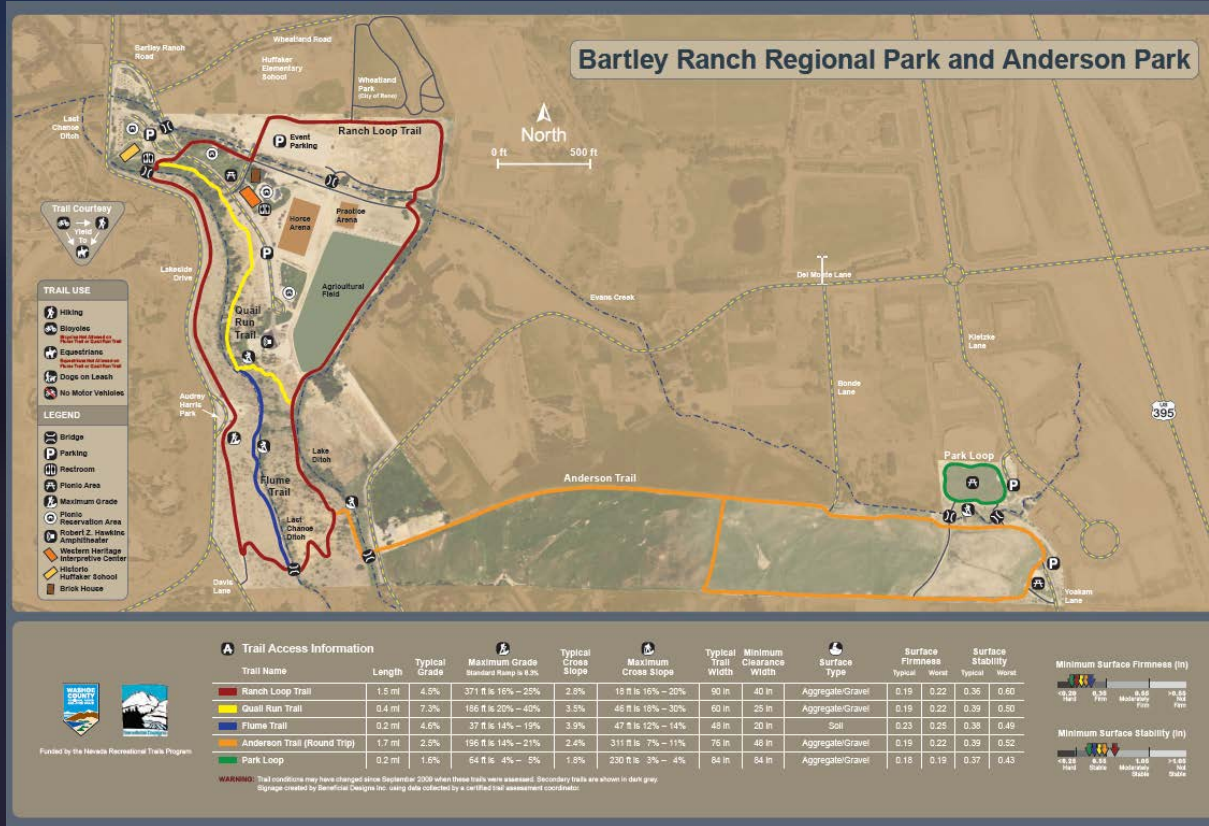


- Trailhead open in 2014
- 3 trails – 4.7 miles
- Proposed trail will connect south to Thomas Creek Trailhead with an additional 3.5 miles to be built; 13.5 miles of trail north to Hunter Creek





Bartley Ranch Park /Anderson Park Trails



- Five trails – total length 4 miles
- Popular for runs/walks/bike special events





Michael D. Thompson Trailhead

- West Reno, connects with Steamboat Ditch to the east
- Dedicated in 2008
- Very small portion (.25 miles) on County property, connects to USFS public lands and Mt. Rose Wilderness





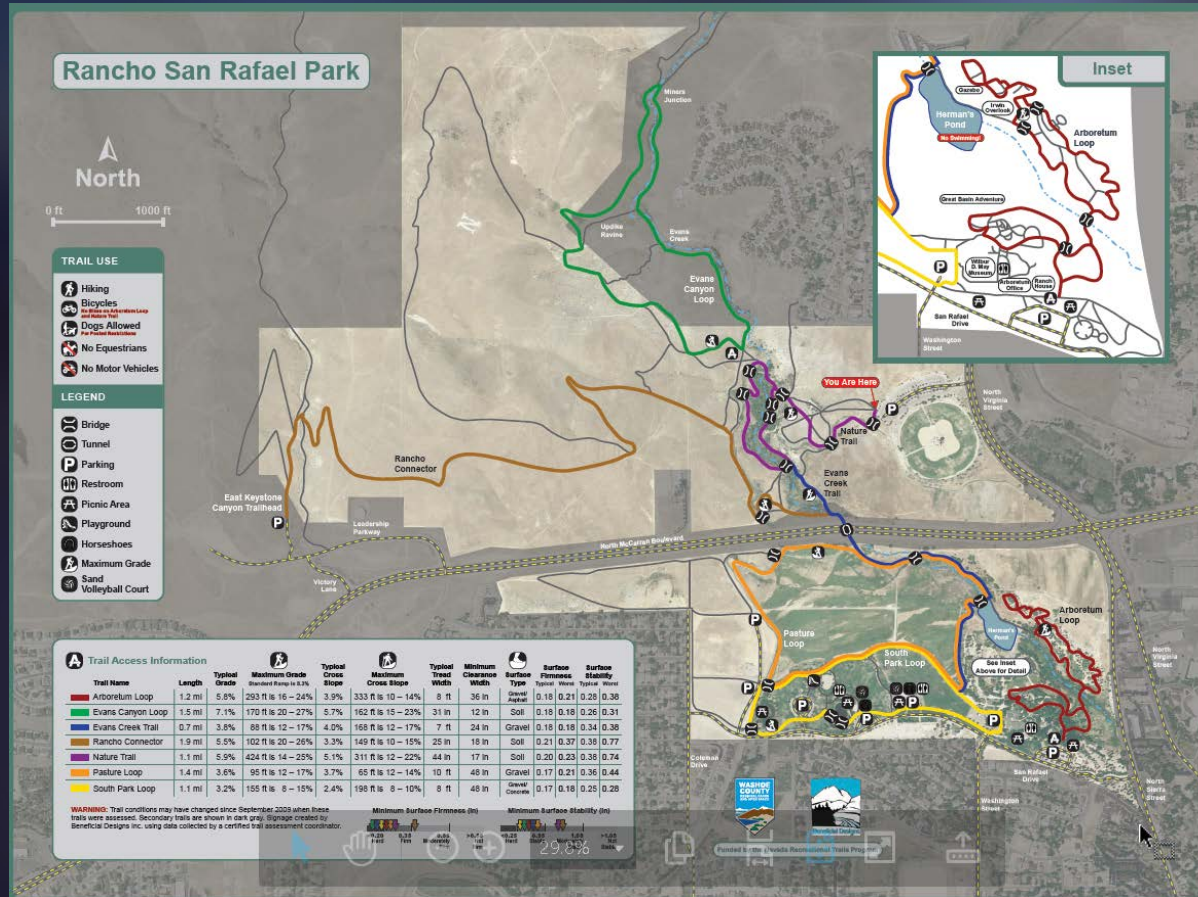
Huffaker Hills Trailhead

- Trailhead opened in 2005
- 4 trails, 2.8 miles total





East Keystone Canyon Trailhead

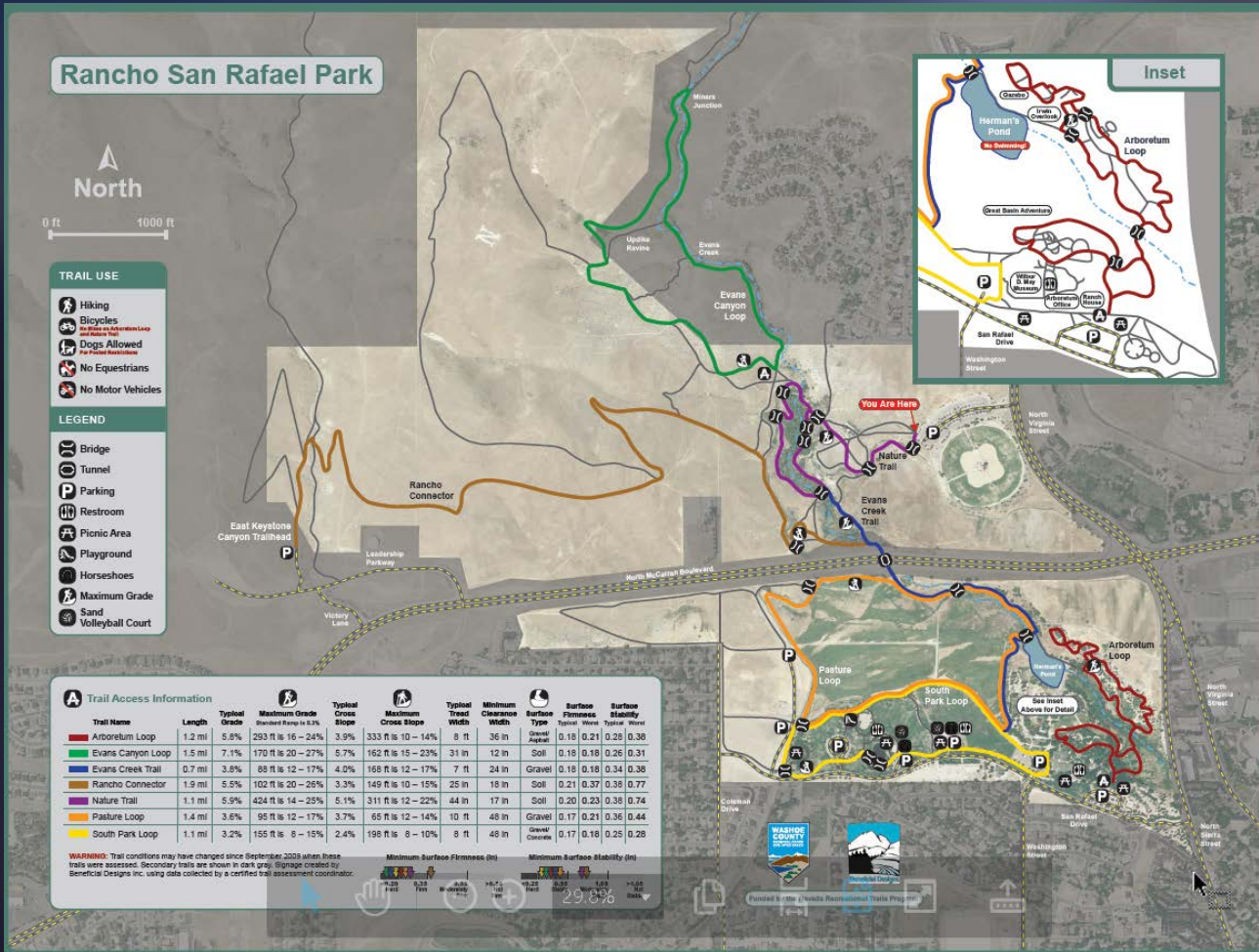


- East Keystone Canyon Trailhead
- West Keystone Canyon Trailhead is motorized and managed by USFS
- Dedicated in 2004





Evans Creek/Canyon Trail

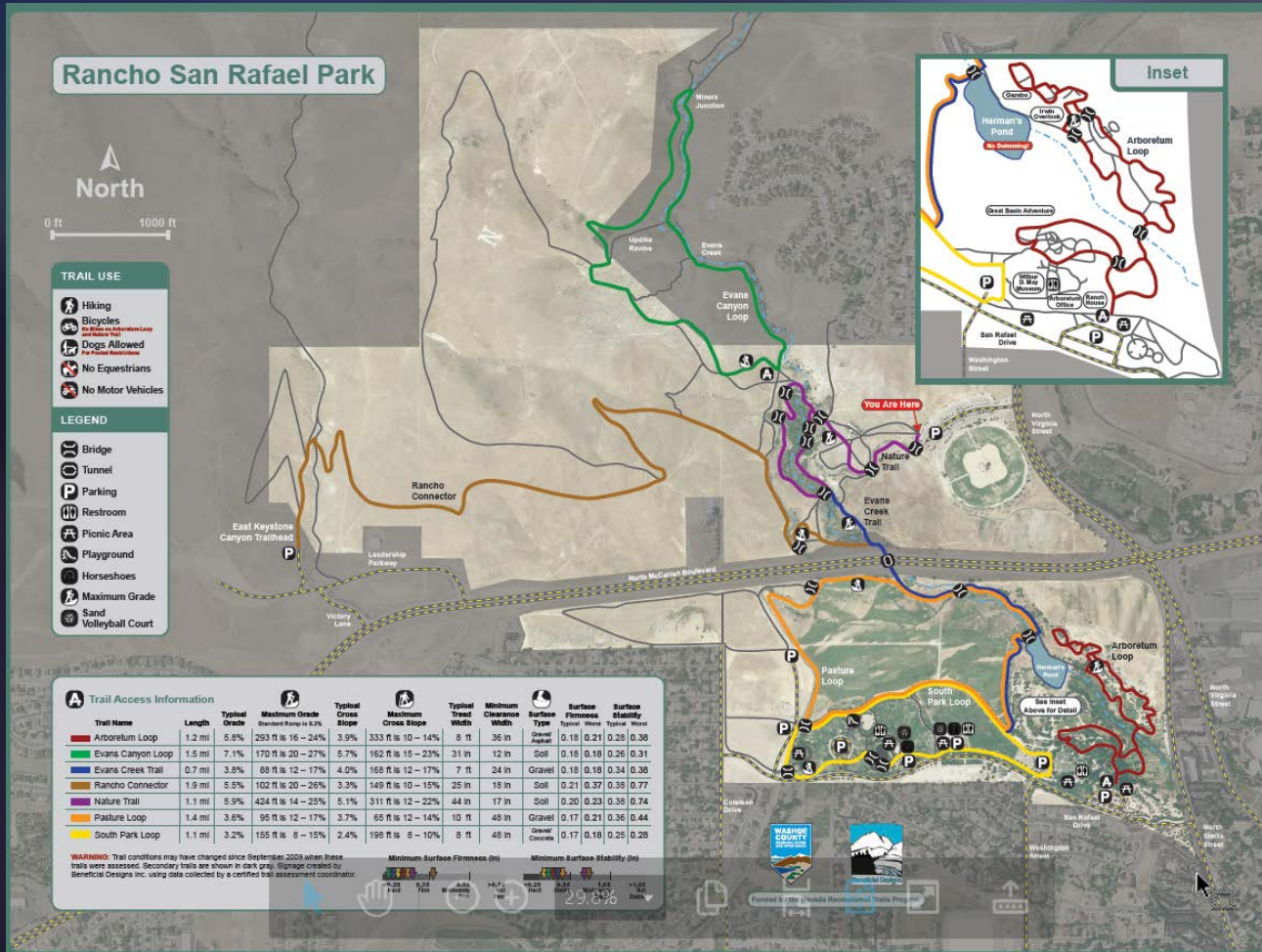


- Evans Creek Trail/Canyon Loop 2.2 miles
- North side of Rancho San Rafael Park by Basque Monument
- Dedicated in 2004





Rancho San Rafael Regional Park trails



- 5 different trails for a total of 5.5 miles
- Many of the trails are used for running and biking special events in the region, including National Cross County and Cyclocross events
- Recent re-route of a section of Evans Creek Trail



Golden Eagle Regional Park Trailhead

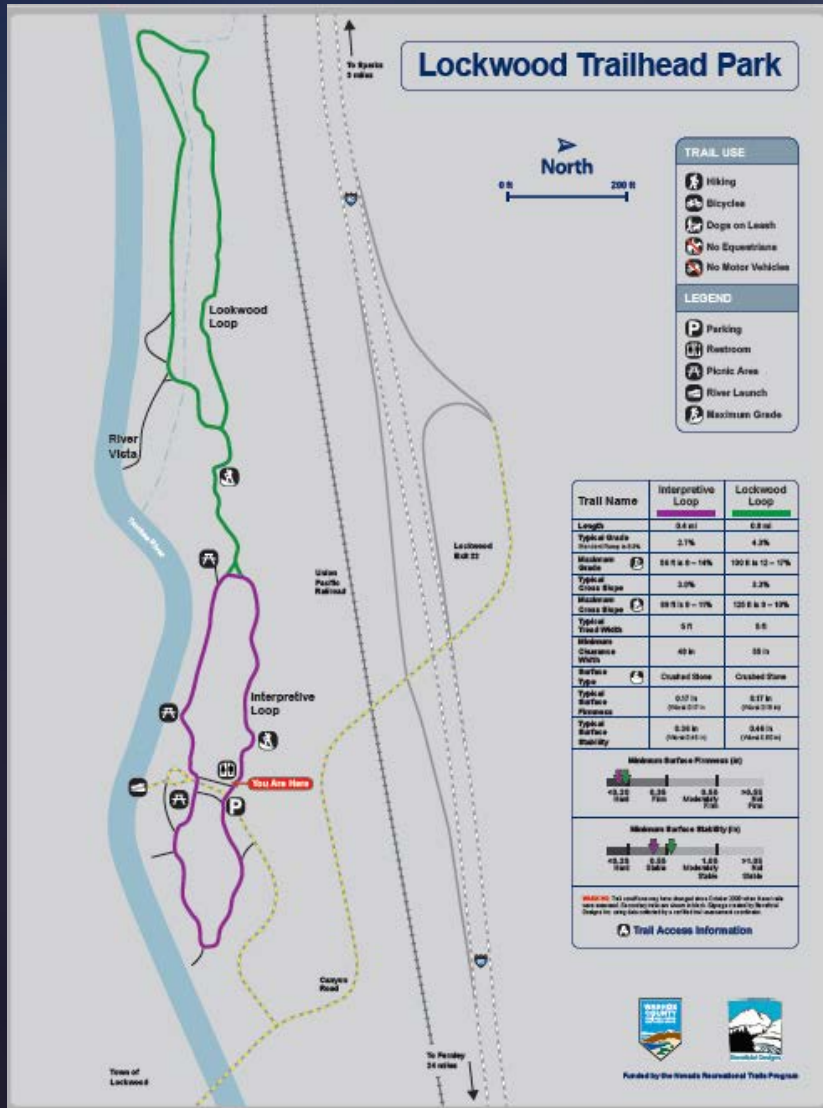
- Trailhead dedicated in 2008
- 0.5 mile paved trail with interpretive panels
- Connects to BLM public lands





Lockwood Trailhead

- Open to the public in 2009
- SQ-1 and WC-1 funding
- 2 trails, 1.2 miles
- River access





North Valleys Regional Park Trails



- Open to the public in 2018
- stacked loop with total trail mileage of 3 miles
 - Easy
 - Intermediate
 - Difficult





East Shore Trail

- Open to the public in June 2019
- The Impossible Trail is 3 miles from Tunnel Creek to Sand Harbor



